

# PARKDALE SECONDARY COLLEGE

## UNIFORM AND DRESS CODE POLICY



**REVIEW DATE: 2024**

**REVIEW PERIOD: 2022- 2026**

**RATIFIED BY SCHOOL COUNCIL: May 2024 (for implementation 15th July 2024)**

Our uniform makes a positive contribution to the culture of the College through establishing a sense of pride and identity. It enables cohesion and enhances the profile of the College and its students within the broader community.

The College Council has developed this Uniform Policy after consultation with the school community. The policy provides clarity regarding the requirements and expectations and enables students to safely engage in the many varied school activities in which they may be involved. This policy is not gender or season specific. The uniform policy is reviewed by the College Council every two years.

### UNIFORM

- All students are to be in full College uniform from the very first day to the very last day of the school year.
- All students are to be in full College uniform when travelling to and from school, and when attending excursions, incursions and official school functions.
- All items of uniform must be well-presented and in good order.
- All items of clothing (including shoes) must be labelled.
- Parents are asked to ensure that their child applies sunscreen before all outdoor activities (extra supplies are available at school).

### OUT OF UNIFORM

Students out of uniform must bring a note from their parent/guardian explaining the reason for being out of uniform and must carry an 'Out of Uniform' pass issued by their Tutor Teacher. Tutor teachers will work in conjunction with Year Level Coordinators to discuss consequences if necessary.

No student should be in their Physical Education uniform or sports shoes in Tutor Group or in any classes.

The only exceptions to this rule are:

Year 7s – TUESDAYS & days when they have a timetabled PE class they may wear PE uniform all day.

Year 8s – FRIDAYS & days when they have a timetabled PE class they may wear PE uniform all day.

### BREACHES OF UNIFORM POLICY

FIRST breach:

- A reminder and request to remove the banned item.

SECOND and further breaches:

- An escalation of consequences that may include: contacting parents, confiscation of banned items (items confiscated will be stored securely and returned to student at an agreed time), detention, withdrawal from activities/class.

### EXEMPTIONS FROM UNIFORM POLICY

Decisions about exceptions will be made on an individual basis, in consultation with parents.

Legal requirements necessitate that exemptions from the Parkdale Secondary College Uniform Code can be provided where an aspect of the code:

- Prevents compliance with an ethnic, religious or cultural belief;
- Prevents students with disabilities from being able to participate in school;
- Affects a health condition.

Applications must be made in writing to the Principal by the beginning of the school year and must be accompanied with the necessary verification documentation, e.g. Medical certificate, a letter from religious leader, etc.

In cases of economic hardship, parents or guardians should contact the Business Manager or Wellbeing Team for assistance.

All School Council approved items of uniform are available from Bob Stewart, 93 Balcombe Road, Mentone.

Second-hand items may be available for purchase through: <https://www.sustainableschoolshop.com.au/> or at the Annual Parents Association Second hand uniform sale

### EVALUATION

This policy will be reviewed and ratified every 4 years by School Council.

Proposed amendments to this policy will be discussed with student representatives, staff and School Council.

# PARKDALE SECONDARY COLLEGE UNIFORM AND DRESS CODE POLICY



## COLLEGE UNIFORM

The following items are approved uniform items to be worn to school each day, including travelling from home to school and from school to home. School uniform is also required when attending excursions, incursions and official school functions.

<b>DRESS</b>	Official College white, navy and green check dress. Easy care polyester/cotton. White collar with navy piping.
<b>SHIRTS</b>	Stripe with College crest – Short or Long-sleeved.
<b>SKIRT</b>	Official College Navy striped skirt.
<b>SHORTS</b>	Tailored College Navy – Two styles: Front pocket with pleats. Zip side pocket with pleats.
<b>TROUSERS</b>	Tailored College Navy – Two styles: Front pocket with pleats and straight-cut leg. Zip side pocket with pleats and tapered leg.
<b>SOCKS/TIGHTS</b>	Official College socks to be worn with all uniform options (white with navy/green/gold stripe). Navy/black tights can be worn with Skirt only.
<b>SHOES</b>	ONLY Standard plain black leather polishable lace-up <b>school shoes</b> – Please check below or in the student organiser and website for allowable styles. Shoes must be done up.
<b>BAGS</b>	Only approved school backpacks may be used. School bags are not to be taken to classes.

## OPTIONAL OUTER GARMENTS

Outer garments to be worn with school or sport uniform; can be worn indoor & outdoor.

<b>JUMPER</b>	Official College blue jumper. (Year 12 students may wear the College blue jumper or the Year 12 top.)
<b>BLAZER</b>	Official College Blazer
<b>SHELL JACKET</b>	Official softshell jacket with college crest. * Previous nylon sports jacket is no longer permitted.

## OPTIONAL ACCESSORIES

<b>BELT</b>	Plain black leather/vinyl belt.
<b>SCARF</b>	Navy plain knit scarf. To be worn ONLY with the Skirt/long Trousers. Students wearing the scarf, must also be wearing either the jumper, jacket or blazer.
<b>TIE</b>	Official Parkdale Secondary College diagonal Navy, Green Gold striped tie.

## SPORTS UNIFORM AND PHYSICAL EDUCATION UNIFORM

The correct sport uniform must be worn in Physical Education classes, sport and in any inter-College sporting events.

<b>SPORT POLO</b>	Official College Navy/green with crest.
<b>SPORTS SHORTS</b>	Official College Navy with crest.
<b>TRACK PANTS</b>	Official College Navy with crest.
<b>RUGBY TOP</b>	Official College striped top with crest.
<b>SOCKS</b>	Official College Socks (white with navy/green/gold stripe).
<b>HAT</b>	The official College cap or plain navy wide-brimmed hat <b>MUST</b> be worn for all PE/Sports classes and outdoor excursions during Terms 1 and 4. Students are also encouraged to wear them during recess and lunch breaks.
<b>SHELL JACKET</b>	Official softshell jacket with college crest. *Previous nylon sports jacket is no longer permitted.
<b>ESP ONLY</b>	Official College Singlet or Long sleeved top with crest.

## GENERAL

<b>HAIR</b>	Hair is to be well-managed, clean, safe and off the face. Long hair is to be tied back in all practical classes. Hair colour is to be natural looking and not extreme. Extreme styles and/or 'trends' are not permitted. The Principal will make the final decision regarding extreme hairstyles. Facial hair must be clean, neat and trimmed.
<b>MAKE UP</b>	Makeup must not be obvious or excessive. Coloured nail polish is not permitted. Nails should be of a length that does not impact on capacity to complete school activities in a safe manner.
<b>JEWELLERY</b>	Permitted jewellery: <ul style="list-style-type: none"> <li>• Watch</li> <li>• Earrings – stud or sleeper <b>ONLY</b>. Maximum of two per ear. Sleepers no larger than 10mm in diameter</li> <li>• Nose – silver or gold stud <b>ONLY</b>. Maximum of one. Stud no larger than 2mm in diameter.</li> <li>• No other visible piercings permitted</li> </ul>
<b>OTHER</b>	Any items worn under the uniform must be plain white, without designs, and not visible.
<b>SUNSMART</b>	Students are encouraged to be sunsmart and wear hat, sunglasses, long sleeves and sunscreen when outside.

# PARKDALE SECONDARY COLLEGE UNIFORM AND DRESS CODE POLICY

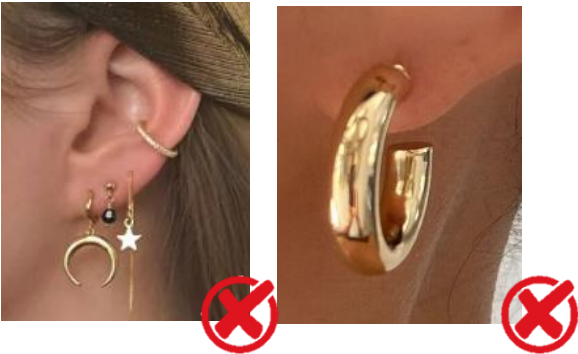


## JEWELLERY

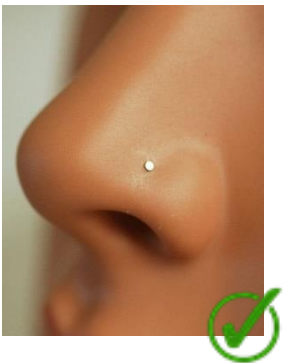
### ACCEPTABLE



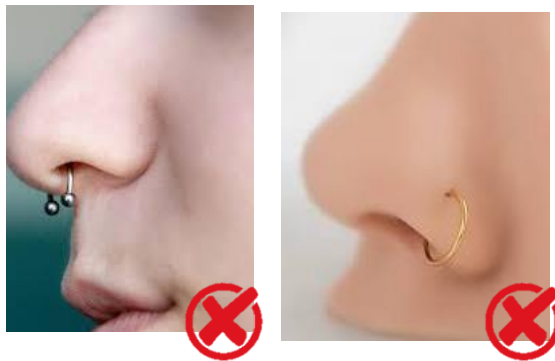
### NOT ACCEPTABLE



### ACCEPTABLE



### NOT ACCEPTABLE



# PARKDALE SECONDARY COLLEGE UNIFORM AND DRESS CODE POLICY



## SHOES

### ACCEPTABLE



### NOT ACCEPTABLE

